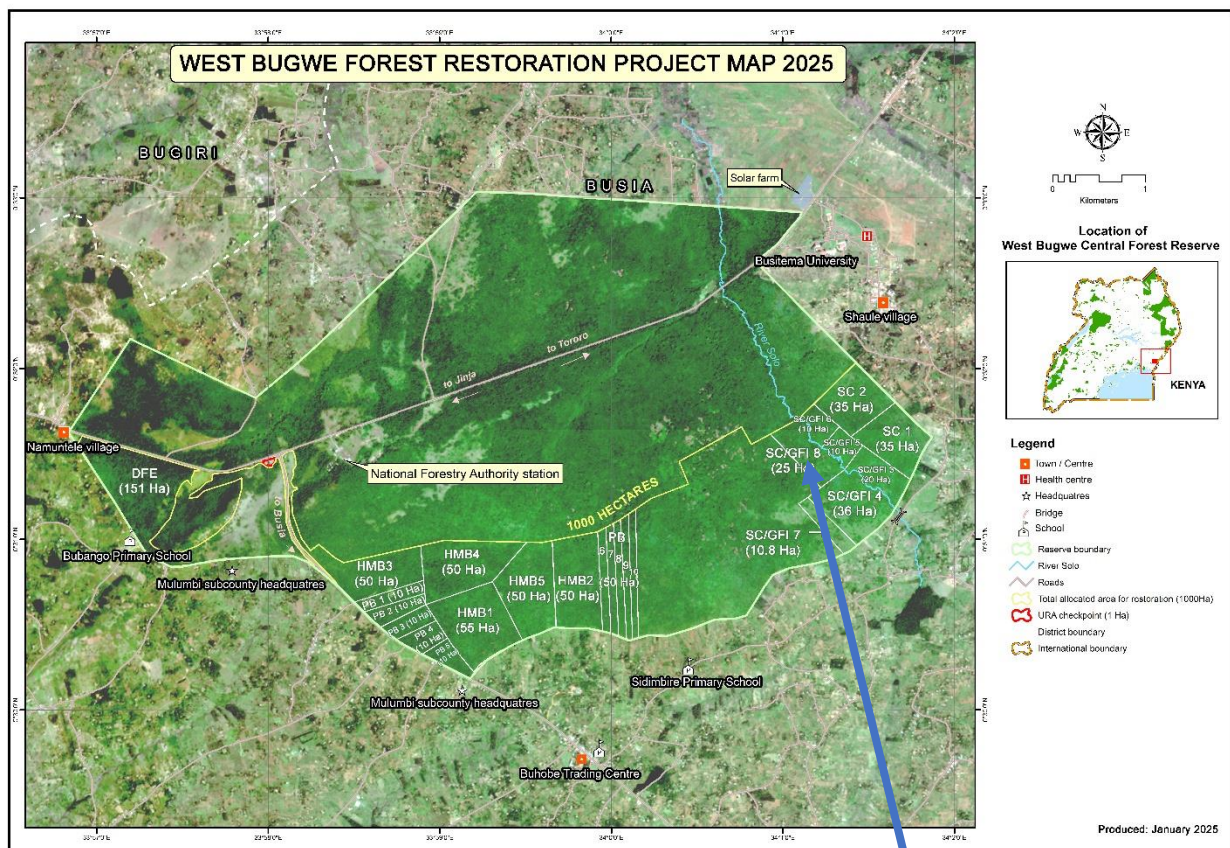


FOREST RESTORATION PLAN FOR 25 HECTARES WITH SUPPORT FROM GROW FOR IT IN WEST BUGWE CENTRAL FOREST RESERVE IN 2025

Introduction

UTGA has a memorandum of understanding (MoU) with the National Forestry Authority (NFA) to manage and restore 1,000 hectares of degraded forest in the West Bugwe Central Forest Reserve in Busitema, Busia District. Through this arrangement UTGA has successfully carried out forest restoration activities since 2021 and has restored over 450 hectares so far. The area to be restored with support from Grow for It in 2025 is 25ha and a portion/compartment of the allocated area. Its geographical location is 0°31'39" N 34°00'59" E as shown below and named as SC/GFI 8.

Below is the forest map showing the location of the compartment to be planted



Location of the 25Ha

Preparations for restoration activities for the 25 hectares will include,

- a) Initially demarcating off the area to be restored out of the remaining unrestored area. This has been done and indicated as SC/GFI 8 on the West Bugwe Forest Restoration Project map 2025.
- b) UTGA has the required 15,625 assorted indigenous tree seedling at its nursery.
- c) Working with communities through contractors to mobilize local labor for the tree planting activities.

Species choice

The planting will be done using an assortment of indigenous species. The choice of species will be derived from past experience in the initial plantings. The species choice is also based on recommendations from the existing forest management plan with technical advice from the NFA and a good species mix will be considered during the plantings. The species of choice include; *Khaya anthotheca*, *Vitex doniana*, *Spathodea Campanulata*, *Newtonia buchananai*, *Makhamia lutea*, *Cordia africana*, *Albizia species*, *Prunus Africana*, *Antiaris toxicaria* and *Milicia excelsa*.

Source of planting material

UTGA operates a certified tree seedling nursery that has produces some of the seedlings but also works closely with a network of other certified nurseries. For the 25 hectares to be planted this season (March-May 2025), in excess of 17,000 seedlings will be procured from both the UTGA nursery and NFA nurseries.

The planting models

Based on the current status of the forest, the restoration planting will include a combination of row plantings and liberation where the forest cover constitutes bushes of invasives and shrubs. One-meter-wide planting rows will be created from one compartment boundary to another.

The planting rows will be created four meters apart and the trees planted at a four-meter spacing along the rows to achieve a general spacing of 4M x 4M. This implies that the planting intensity will be 625 trees per hectare.

The planting will be done during the rainy season (March-May 2025) to allow the new plants get enough rain during the year. After one month of planting a survival assessment will be done to ascertain the success from the initial planting. This will then inform the quantity of seedlings needed for replacement which will be done as soon as possible.

The trees will be left to grow till the next rainy season September-November 2025 where the planting rows will be reopened and the trees spot weeded. During this time some replacements of trees will be done where necessary and the saplings that are found along the planting rows, liberated wherever necessary.

UTGA will use the services of forest contractors with focus on the use of labor from the forest adjacent communities, who will undertake the land preparation, planting and tending operations. UTGA technical staff will oversee all the operations to ensure that they are done in a responsible and professional manner. Prior to each activity, all workers will undergo a refresher awareness brief or training on best practices like silviculture and safety.

All operations will be done so as to meet FSC standards for sustainable forestry management since the forest is FSC certified both for forest management and for provision of certified ecosystem services.

Below is the workplan showing key milestones throughout the year

		2025											
	ACTIVITIES	Jan	Feb	Mar	Apr	May	Jun	Jul	Aug	Sept	Oct	Nov	Dec
1	Seedling procurement & delivery		■	■	■								
3	Conduct Planning visits		■		■								
4	Demarcation (Mapping)	■			■								
5	Land Preparation			■	■	■							
6	Preparation of planting rows				■	■							
7	Marking & Pitting				■	■							
8	Tree Planting			■	■	■							
9	Survival assessments					■			■				
10	Blanking					■				■	■		
11	Spot weeding									■	■		
12	Protection						■	■	■	■	■	■	■
13	Supervision	■	■	■	■	■	■	■	■	■	■	■	■