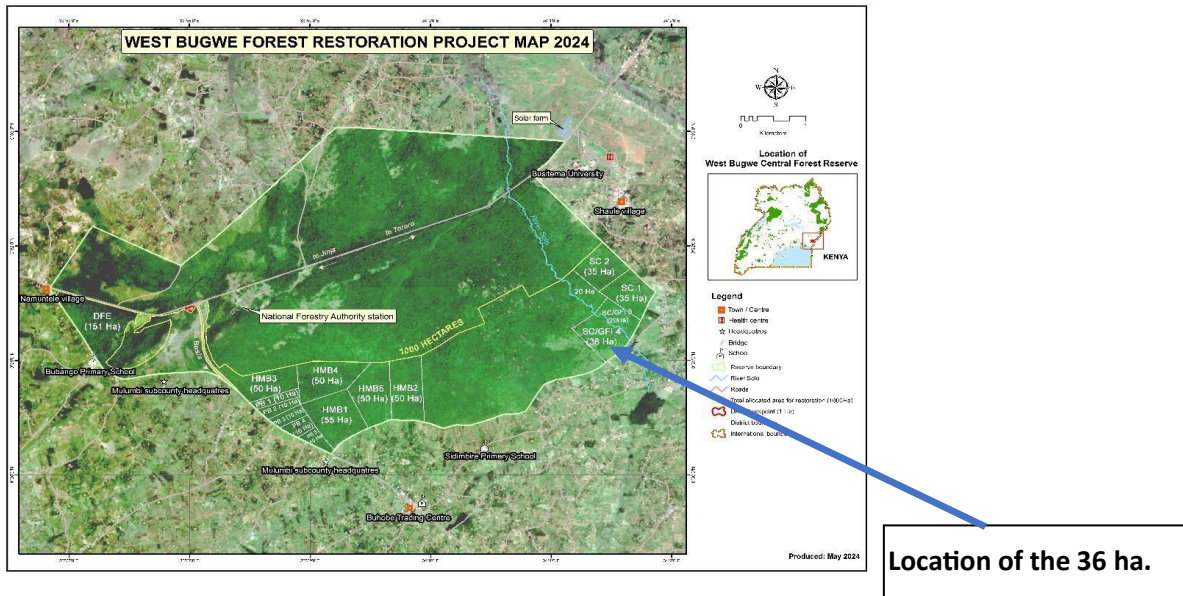


FOREST RESTORATION PLAN FOR 36 HECTARES WITH SUPPORT FROM GROW FOR IT/SILVA CAUSA IN WEST BUGWE CENTRAL FOREST RESERVE IN 2024

Introduction

UTGA has a memorandum of understanding (MoU) with the National Forestry Authority to manage and restore 1,000 hectares of degraded forest in the West Bugwe Central Forest Reserve in Busitema, Busia District. Through this arrangement UTGA has successfully carried out forest restoration activities since 2021 and has restored over 300 hectares so far. The area to be restored with support from Grow for It in 2024 is a portion/compartment of the allocated area and its geographical location is 0°31'12" N 34°01'32" E

Below is the forest map showing the location of the compartment to be planted.



Preparations for restoration activities for the 36 hectares will include,

- First demarcating off the area to be restored out of the remaining unrestored area.
- UTGA has the required 22,500 assorted indigenous tree seedling at its nursery.
- Working with local communities through contractors to mobilize local labor for the tree planting activities.

Species choice

The planting will be done using an assortment of indigenous species. The choice of species will be derived from past experience in the initial plantings. The species choice is also based on recommendations from the existing forest management plan with technical advice from the National Forestry Authority. These will include;

Khaya anthotheca, Vitex doniana, Spathodea Campanulata, Newtonia buchananai, Makhamia lutea, Cordia africana, Albizia species, Antiaris toxicaria and Milicia excelsa.

Source of planting material

UTGA operates a certified tree seedling nursery that has produced some of the species but also works closely with a network of other certified nurseries. For the 36 hectares to be planted this season (April/May 2024), seedlings will be procured from both the UTGA nursery and National Forestry Authority nurseries.

The planting models.

Based on the current status of the forest, the restoration planting will include a combination of row plantings and liberation where the forest cover constitutes of bushes of invasives and a few shrubs. Onemeter-wide planting rows will be created from one compartment boundary to another. The planting rows will be created four meters apart and the trees planted at a four-meter spacing along the rows to achieve a general spacing of 4M x4M this implies that the planting intensity will be 625 trees per hectare. The planting will be done during this rainy season (April/May 2024) to allow the new plants get enough rain during the year. After one month of planting a survival assessment will be done to ascertain the success from the initial planting. This will then inform the quantity of seedlings needed for replacement which will be done as soon as possible. The trees will be left to grow till the next rainy season September-November 2024 where the planting rows will be reopened and the trees spot weeded. During this time some replacements of trees will be done where necessary and the saplings that are found along the planting rows are liberated wherever necessary.

UTGA will use the services of forest contractors with focus on the use of labor from local communities who will undertake the land preparation, planting and tending operations. UTGA technical staff will oversee all the operations to ensure that they are done in a responsible and professional manner. Prior to each activity, all workers will undergo a refresher awareness brief or training on best practices like silviculture and safety. All operations will be done so as to meet FSC standards for sustainable forestry management.

Below is the workplan showing the key milestones.

		2024											
	ACTIVITIES	Jan	Feb	Mar	Apr	May	Jun	Jul	Aug	Sep	Oct	Nov	Dec
1	Seedling procurement												
3	Conduct visits												
4	Mapping												
5	Land Preparation												
6	Pre. planting rows												
7	Marking & Pitting												
8	Tree Planting												
9	Survival assessments												
10	Blanking												
11	Spot weeding												
12	Protection												
13	Supervision												