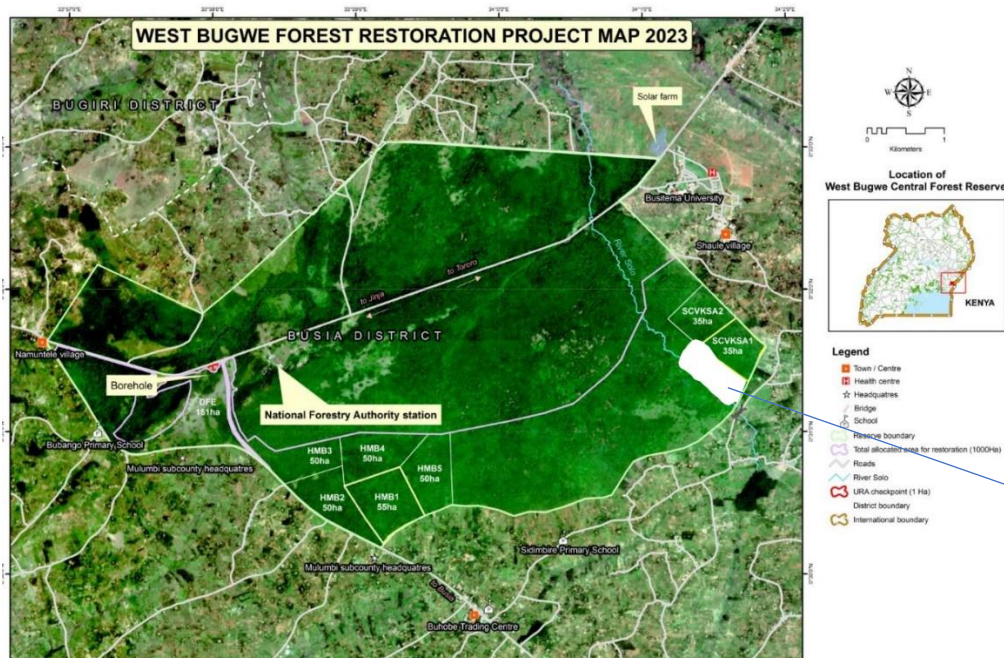


PLAN FOR RESTORATION OF 20 HA IN WEST BUGWE CFR

UTGA has a memorandum of association with the National Forestry Authority to restore 1,000 hectares in the West Bugwe Central Forest Reserve in Busitema, Busia District. The area to be restored is a portion of the allocated area and its geographical location is 0°31'26.38"N 34°01'25.03"E.



Location of the 20Ha

Preparations for restoration activities for the 20 hectares will require,

- First demarcating off the area to be restored out of the remaining unrestored area.
- Procurement of indigenous tree seedlings
- Mobilizing local labor.

Species choice

The planting will be done using an assortment of indigenous species. The choice of species will be derived from prior experience in the initial plantings. The species are also recommendations from the forest management plan and from the National forestry authority. These include;

Khaya anotheca, *Vitex doniana*, *Spathodea Campanulata*, *Newtonia buchananai*, *Makhamia lutea*, *Cordia africana*, *Albizia species*, *Antiaris toxicaria* and *Milicia excelsa*.

Source of planting material

UTGA operates a certified tree seedling nursery but also works closely with a network of other nurseries. For the 20 hectares to be planted this season (April/May 2023), seedlings will be procured from the UTGA nursery.

