

Verification Report - Forest Restoration for Carbon Sequestration in West Bugwe Central Forest Reserve, Uganda

COMPARTMENT/SITE DETAILS

Compartment Name	West Bugwe CFR
GPS Coordinate	Block 1 (606831E; 57876N) Block 2 (607409E; 57261N)
District of planting	Busia
Planting season (2 nd)	October 2021
Site supervisors present	<ol style="list-style-type: none"> 1. Nadunga Florence (0703582905) 2. Mudalya Grace (0706583108) 3. Semenyo Robert (Forest patrol man 0775929490)

PLANTING PROGRESS

Species planted	<p>A broad range of indigenous species and a few exotics: Indigenous species included: <i>Albizia coriaria</i>, <i>Albizia zygia</i>, <i>Maesopsis eminii</i>, <i>Prunus africana</i>, <i>Khaya anthotheca</i>, <i>Tamarindus indica</i>, <i>Antiaris toxicaria</i>, <i>Vitex doniana</i>, <i>Azizelia africana</i>, <i>Spathodea Campanulata</i>, and <i>Markhaemia Lutea</i>, <i>Cordia millenii</i>, <i>Ficus spp</i>, <i>Combretum collinum</i>,</p> <p>Exotic species: <i>Melia volkensii</i>, <i>Gmelina arborea</i>, <i>Terminalia ivorensis</i>, <i>Azadirachta indica</i>.</p>
Seed/clone source	NFA approved sources
Seedling/cutting source	UTGA tree nursery
Average stocking per ha	90 %
Area restored in season (ha) ¹	50 ha restored in two blocks of (28.2 ha + 32.1 ha)

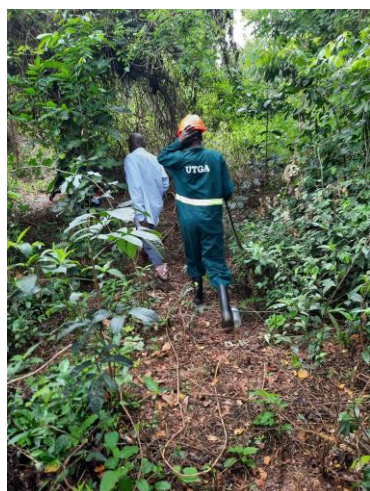
¹ Area will be generated by uploading the GPS points on a computer, map and photographs to be appended.

Sound Forestry Practices

No	Parameter	Meets basic requirements		Observations/findings
		Yes	No	
1.	Species planted (site suitability)	✓		Correct site species matching done, majority of the species being planted are locally growing within the CFR
2.	Quality of seedlings	✓		Seedlings planted were of good quality, however, some were slightly young (less than 20 cm optimum height) but had established well, and were growing vigorously.
3.	Tree Spacing consistency	✓		Seedlings planted at four meter spacing along the trails, and the trails were four meters apart hence a plant espacement of 4M X 4M.
4.	Survival percentage	✓		Survival count was at 90% following a successful planting operation. Seedlings for gap fillings (planned for first season of 2022) were being maintained well at the holding nursery.
5.	Weeding	✓		Weeds well controlled, within the two meters wide trails. However, a number of wildlings (natural regeneration) were observed along the trails. Invasive weeds especially <i>Lantana camara</i> are fast spreading, hindering access and blocking as well seedlings from accessing sunlight in some of the restored sections.
6.	Land/site preparation	✓		Site preparation was done, two meter wide trails cleared to facilitated planting. However, the trails remain closed at the top by the entangled <i>Lantana camara</i> in some areas hence limited light penetration onto the floor of the forest. This will affect as well seedling growth.
7.	Tree health	✓		Planted seedlings were healthy and growing vigorously, with no signs of pests and or diseases noted.
8.	Fire break/ external boundary maintenance		✓	Fire breaks not attended to yet, the team awaits boundary opening to be implemented by NFA before end of year.
9.	Quality of planting	✓		Planting done well, seedlings planted in an upright position, and firmed; planting pits well covered with soil and levelled with the ground.
10.	Environmental aspects	✓		A lot of kaveera and plastics dumped at the boundary of the CFR by road users.

				Inaddition, there are invasive weeds in the area, spreading fast and creating thickets.
11.	Protection of the crop from animals	✓		Domestic animals under control. Patrolling team on site all the time. However, wild animals (Baboons etc.) seem to be increasing in number in the areas being restored. Some of the wild animals were browsing tips of the planted seedlings.
12.	Access (Presence and condition of) road	✓		Good access road leading to the site; the CFR is located along a tamarac road. Access into the forest impaired by the invasive weeds entangled in the area.

Site photos of October 2021 Crop



Forest access impaired by invasive weeds



Lantana Camara spreading fast in the area, obstructing movement along the trails.



Seedlings for beating up at the holding nursery



Seedlings established and growing well. However, the one meter ring is getting weedy



Natural regeneration along the trails, showing potential for Assisted Natural Regeneration in the area.

General: ***Overall Recommendation(s)***

- The area has high potential for natural regeneration, the ideal approach should be to target and remove invasive weeds routinely and keep off forest disturbance (from humans and animals) to facilitate natural regeneration.
- Implement Farmer Managed Natural Regeneration (FMNR) approaches to liberate wildlings of valuable species and planted seedlings from climbers and aggressive weeds.
- Implement a strong policy on Kaveera and plastics (together with NFA) to prevent the locals from dumping non-biodegradable wastes at the periphery of the forest to demonstrate a sustainable and environmentally friendly intervention.
- Re-introduce tree species (non-invasive species) that provide food to the wildlife as a biodiversity strategy.

Inspection done by:

Name:..... Bedijo Nelly Grace**Sign**.....



Date:.....13.12.2021.....